



Lewisham Gateway London

Market Sector:
Residential

The Client:
Sisk

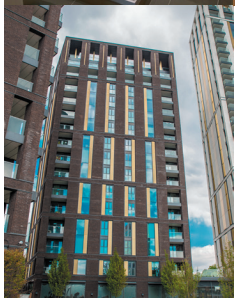
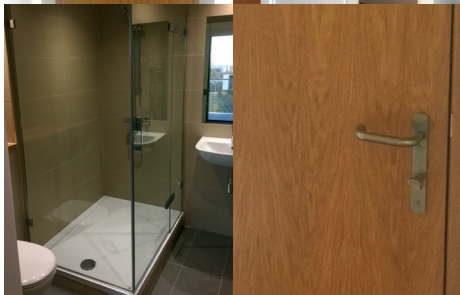
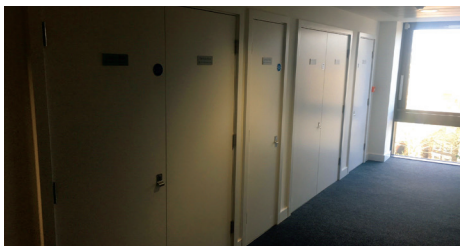
Services supplied:
Carpentry & joinery

THE PROJECT

Our team installed doorsets on communal areas and internal areas of the apartments, as well as skirtings and windowboards and a sliding-door wardrobe systems.

THE PROCESS

We worked directly with the contractor, SISK, on this new-build, dark-clad affordable home scheme in south London, and being outside the centre of the capital – as well as on a larger site, next to the railway station – we didn't experience any of the usual London issues with deliveries.



For further information on our carpentry and joinery services, or for an informal discussion about your project requirements please contact us directly:

M J Hillson Ltd
29 Clophill Road, Maulden
Bedfordshire
MK45 2AA

t: 01525 409400
e: enquiries@mjhillion.co.uk
www.mjhillion.co.uk